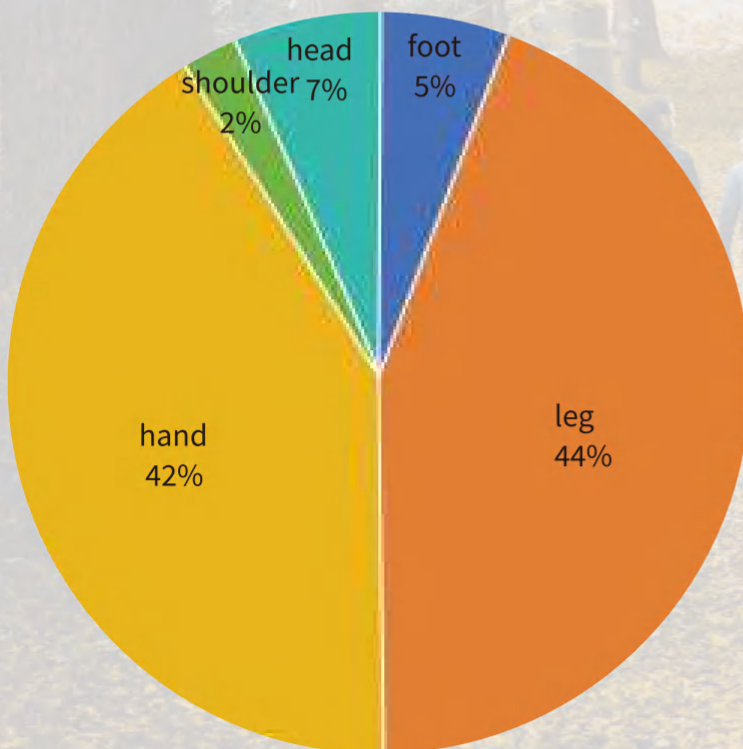


SF  vest[®]



Purpose and Background

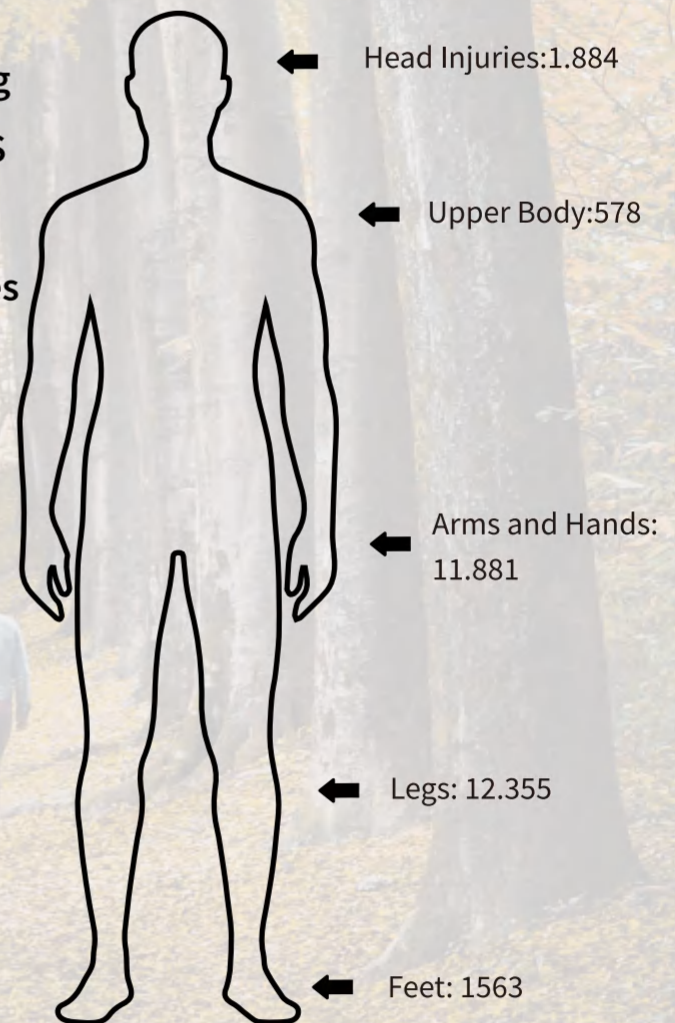
As an efficient but dangerous tool, chainsaws pose a serious risk of leg injury to users during use. According to statistics provided by the US Consumer Product Safety Commission, there were 28261 accident locations and frequencies related to the use of chainsaws.



Schematic diagram of vulnerable areas for loggers

Personal Protective Equipment (PPE)

Required by OSHA Reg. 1910.266
For all employed chain saw operators



Total for 2006: 28,261 Accident location and frequency as related to chain saw use.

Statistics provided by: US Consumer Products Safety Commission

Anti cutting pants function

They ensure that the leg area is protected to prevent injury, especially in the forestry field where many loggers use chainsaws. The characteristic of anti cutting pants is that they have cutting protection materials inside, which are polyester fibers vertically processed from the hips to the ankles. These materials allow the chain saw to stop once it comes into contact with the pants, causing damage to the upper layer of the pants, entanglement of the thread, and obstruction of the saw.

To provide protection, different functional principles can be adopted. These include: a) Chain slippage: When you touch the protective material with a chainsaw, the chain will not cut the material, but will slip off the material. b) Blockage: The fibers of the chainsaw protective suit material are sucked into the drive sprocket by the chain, preventing the chain from moving and protecting you from injury. c) Chain brakes: The fibers of your chainsaw clothing have high resistance to cutting and absorb rotational energy, which is how they reduce the speed of the chainsaw. These functional principles can be integrated into your chainsaw protection material



SFChap01

DETAIL



Category A

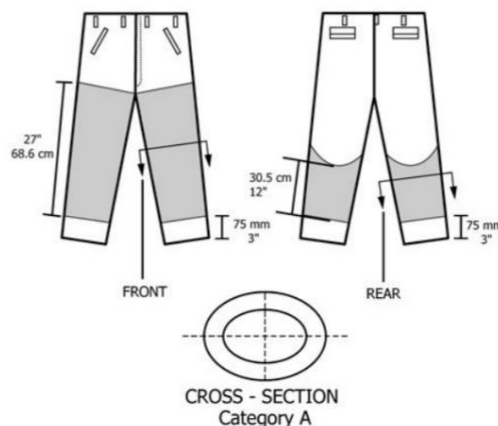
Style (Calf Wrap Chap, Apron, or Pant):

» Calf Wrap Chap

Protective Material Designation:

» Chainsaw-proof fabric

Number of Protective Material Layers: 5



SFChap02

Style (Calf Wrap Chap, Apron, or Pant):

» Apron

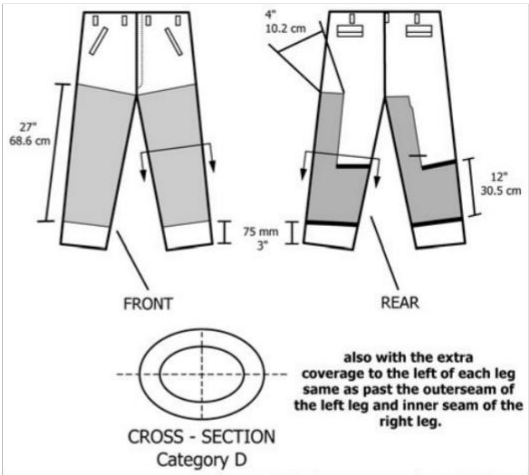
Protective Material Designation:

» Chainsaw-proof fabric

Number of Protective Material Layers: **5**



Category D



SFChap03

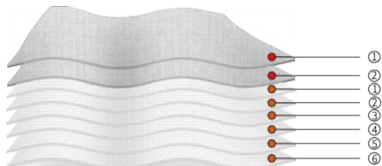
Style (Calf Wrap Chap, Apron, or Pant):

» Apron

Protective Material Designation:

» Chainsaw-proof fabric

Number of Protective Material Layers: **6+2**



DETAIL



SFChap04

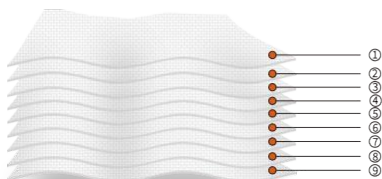
Style (Calf Wrap Chap, Apron, or Pant):

» Apron

Protective Material Designation:

» Chainsaw-proof fabric

Number of Protective Material Layers: **9**



SFChap05

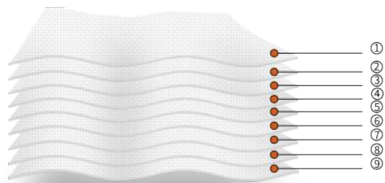
Style (Calf Wrap Chap, Apron, or Pant):

» Apron

Protective Material Designation:

» Chainsaw-proof fabric

Number of Protective Material Layers: 9



DETAIL



SFChap06

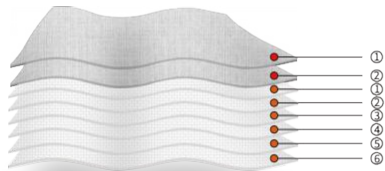
Style (Calf Wrap Chap, Apron, or Pant):

» Apron

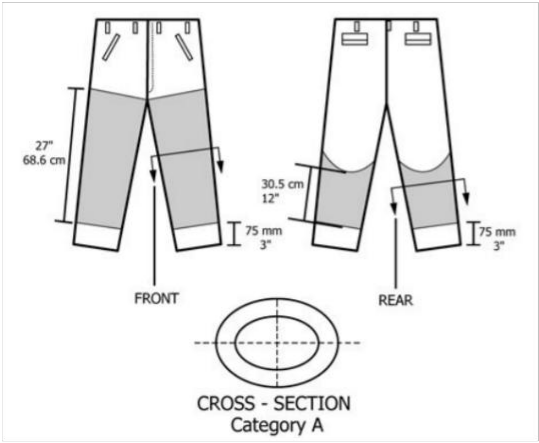
Protective Material Designation:

» Chainsaw-proof fabric

Number of Protective Material Layers: 6+2



Category A

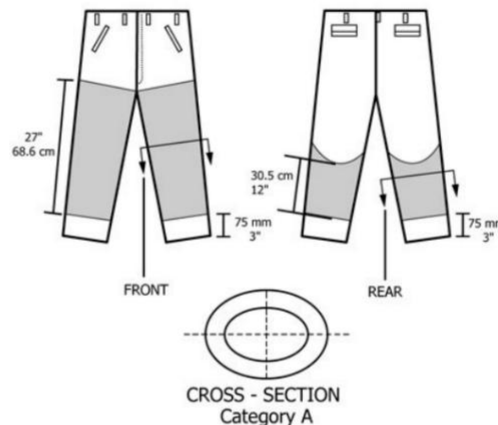


SFChap07

DETAIL



Category A



Style (Calf Wrap Chap, Apron, or Pant):

» Pant

Protective Material Designation:

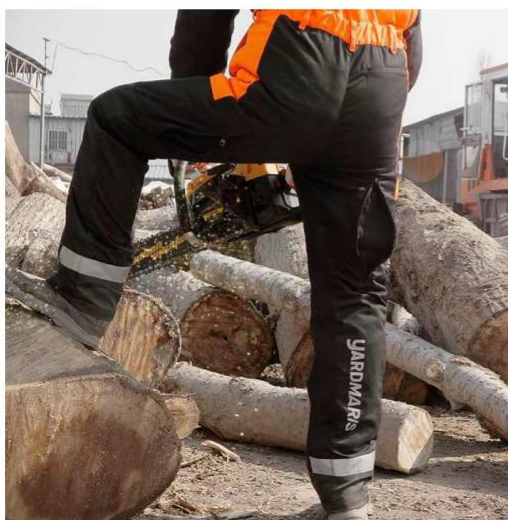
» Chainsaw-proof fabric

Number of Protective Material Layers: 6



» Enhanced Visibility: The protective chainsaw pants feature 2-inch reflective tape on the lower leg and a reflective YARDMARIS logo at the back of the right calf. The bright orange fabric on the front side ensures high visibility, providing safety in low-light or poor visibility situations.

» Adjustable Fit and Comfort: With an adjustable waistband and suspenders, our chainsaw pants offer a secure and customized fit. The kidney pad on the back of the pants provides support for braces, while the suspenders keep the pants in place. Vent zippers at the back offer improved cooling for enhanced comfort during long working hours.



SFChap08

Style (Calf Wrap Chap, Apron, or Pant):

» Apron

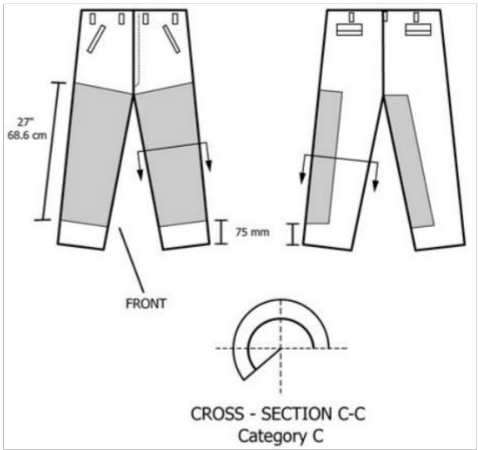
Protective Material Designation:

» Chainsaw-proof fabric

Number of Protective Material Layers: 5



Category C



SFChap09

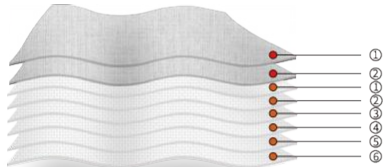
Style (Calf Wrap Chap, Apron, or Pant):

» Apron

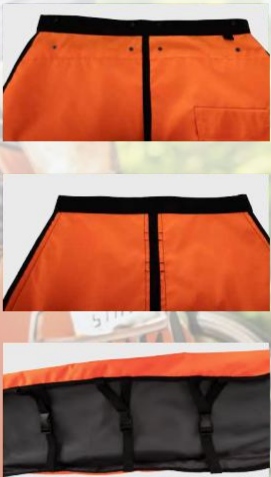
Protective Material Designation:

» Chainsaw-proof fabric

Number of Protective Material Layers: 6+2



DETAIL



SFChap10

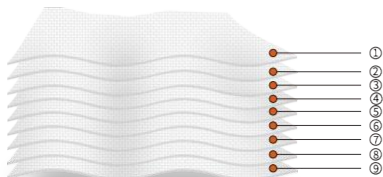
Style (Calf Wrap Chap, Apron, or Pant):

» Apron

Protective Material Designation:

» Chainsaw-proof fabric

Number of Protective Material Layers: 9



SFChap11

DETAIL



Style (Calf Wrap Chap, Apron, or Pant):

» Pant

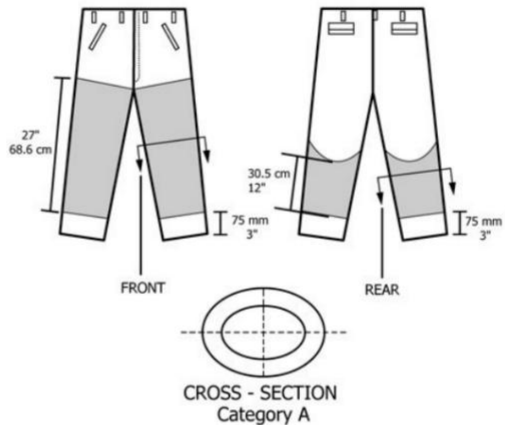
Protective Material Designation:

» Chainsaw-proof fabric

Number of Protective Material Layers: 5



Category A



SFChap12

DETAIL



Style (Calf Wrap Chap, Apron, or Pant):

» Pant

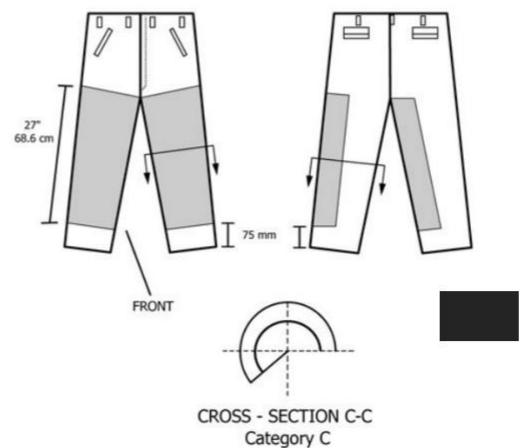
Protective Material Designation:

» Chainsaw-proof fabric

Number of Protective Material Layers: 6



Category C



SFChap13



Style (Calf Wrap Chap, Apron, or Pant):

» Apron

Protective Material Designation:

» Chainsaw-proof fabric

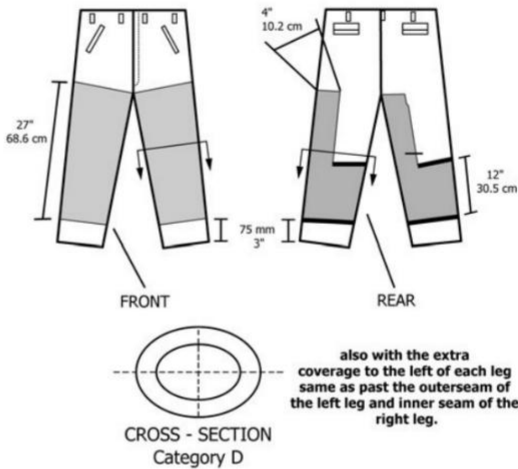
Number of Protective Material Layers: 5



DETAIL



Category D



SFChap14



Style (Calf Wrap Chap, Apron, or Pant):

» Apron

Protective Material Designation:

» Chainsaw-proof fabric

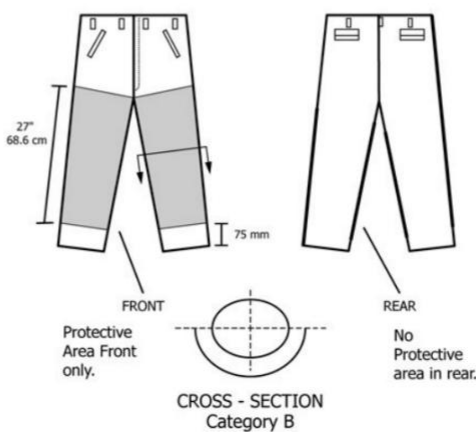
Number of Protective Material Layers: 6



DETAIL



Category B



SFChap15

DETAIL



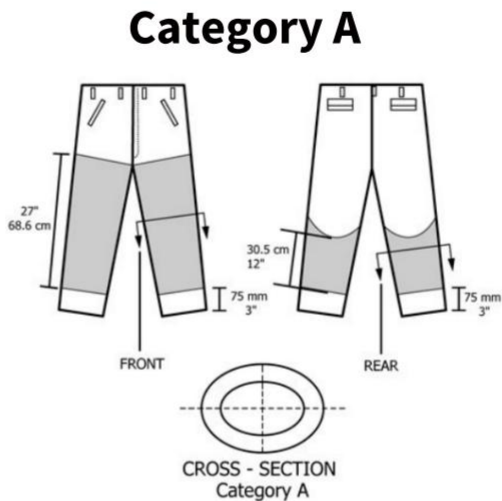
Style (Calf Wrap Chap, Apron, or Pant):

» Apron

Protective Material Designation:

» Chainsaw-proof fabric

Number of Protective Material Layers: 6



SFChap16

Style (Calf Wrap Chap, Apron, or Pant):

» Apron

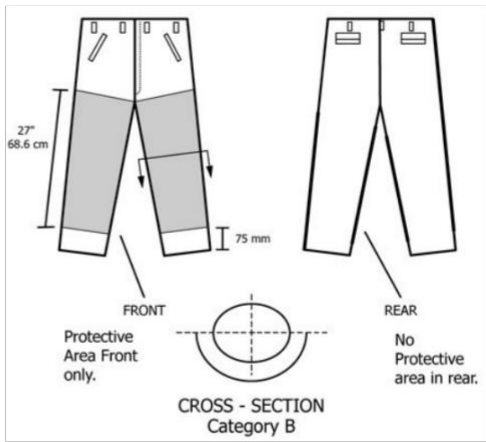
Protective Material Designation:

» Chainsaw-proof fabric

Number of Protective Material Layers: 6



Category B



SFChap17

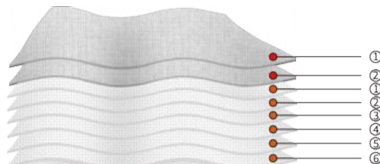
Style (Calf Wrap Chap, Apron, or Pant):

» Apron

Protective Material Designation:

» Chainsaw-proof fabric

Number of Protective Material Layers: 6+2



SFChap18

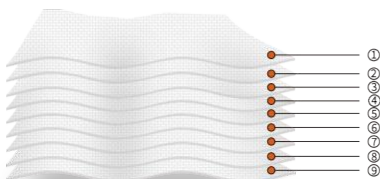
Style (Calf Wrap Chap, Apron, or Pant):

» Apron

Protective Material Designation:

» Chainsaw-proof fabric

Number of Protective Material Layers: 9



DETAIL

