



# JINCHEN SPORTS CATALOG

## 锦辰运动产品目录

Professional Fitness Equipment Manufacturer

# ABOUT US

## JINCHEN SPORTS

金华市锦辰运动器材有限公司是一家集研发、制造与销售于一体的专业健身器材生产商。公司主营健身车、动感单车、划船器、椭圆机等产品，并通过EN957、CE、ROHS等认证，产品远销欧美、东南亚、澳洲、中东、南美等数十个国家和地区，深受国际市场认可。

公司坐落于浙江金华，占地面积10,000余平方米，配备激光切割机、焊接机械手、装配流水线等先进设备和智能生产线，现有员工90余人，其中核心技术团队拥有20年以上行业经验，年生产能力达15万台，可灵活满足不同客户的订单需求。

近年来，公司积极布局跨境电商领域，针对海外市场常见的客诉问题，进行系统性优化，建立全流程服务体系，始终秉承"以质量求生存，以更高性价比提供优质产品"的企业理念，将品质管控置于首位，持续提升客户满意度。

锦辰运动期待与全球合作伙伴携手并进，共创美好未来！

Jinhua Jinchen Sports Equipment Co., Ltd. is a professional fitness equipment manufacturer integrating R&D, manufacturing and sales. Our main products are exercise bike, spin bike, rowing machine, elliptical machine, etc. We have passed the certification of EN957, CE, ROHS, etc. Our products are exported to dozens of countries and regions such as Europe, America, Southeast Asia, Australia, the Middle East, South America, etc., and are well recognized by the international market. Located in Jinhua, Zhejiang Province, the company covers an area of more than 10,000 square meters, equipped with laser cutting machine, welding robot, assembly line and other advanced equipment and intelligent production line, the existing staff of more than 90 people, including the core technical team with over 20 years of industry experience, the annual production capacity of 150,000 units, and can be flexible to meet the needs of different customer orders.

In recent years, the company actively layout cross-border e-commerce field, for the common customer complaints in overseas markets, systematic optimization, the establishment of the whole process service system, always adhering to the "quality of survival, to provide quality products at a higher cost-effective" corporate philosophy, the quality control is placed in the first place, and continue to improve customer satisfaction.

JC Sport is looking forward to working hand in hand with global partners to create a better future!



# Certificate

All fitness equipment of Jinchen Sports has passed CE, ROHS, EN957, EMC and other certifications.

**Test Report** No.: **64.190.24.4116.01-00**  
Dated: **2024-12-05**

**Applicant:** Jinchu Jinchu sports equipment Co., Ltd  
**Address:** Floor 1, plant 3, NO.998, jinsha street, Linjiang Industrial Zone, baliangqiao Town, Wucheng District, Jinhua City, Zhejiang Province  
**Sample Submission:** The sample was submitted by applicant and identified.  
**Product Name:** Spinning Bike  
**Identification/Style No.:** JC306  
**Order No.:** /  
**Manufacturer:** /  
**Address:** /  
**Country of Origin:** /  
**Buyer:** /  
**Export to:** /  
**Receipt Date of Sample:** 2024-10-22, 2024-12-04  
**Date of Testing:** From 2024-10-23 to 2024-12-05  
**Test Result:** Refer to the data listed in following pages

**Test Specifications or Test Items:** **Conclusions:**

- EN ISO 20957-1:2013 (Excluding clause 5.13) **Pass**
- EN ISO 20957-10: 2017 **Pass**

**Hardline Laboratory**  
TUV SUD Certification and Testing (China) Co., Ltd  
Guangzhou Branch

**Tested By:** Leon Huang **Reviewed By:** Pein Xu  
Leon Huang **Test Engineer** Pein Xu **Designated Reviewer**

**Note:**  
1) The TUV SUD Certification and Testing (China) Co., Ltd. "General Terms & Conditions" apply.  
2) The test results are based on the information provided by the applicant. The test results are only valid for the products tested. This report is the result of a single examination of the product and does not constitute a guarantee of the quality of the product in regular production. For further details please see "Testing, Certification, Validation and Inspection Regulations" (pages A-1.3 to A-1.5).  
3) For further information please refer to: [www.tuv.com](http://www.tuv.com) or [www.tuv.cn](http://www.tuv.cn) or [www.tuv.com.cn](http://www.tuv.com.cn) or [www.tuv.com.cn](http://www.tuv.com.cn)  
4) The results are valid only in the form tested.  
5) The test results are not to be reproduced without the written approval of the laboratory.

**Laboratory:** TUV SUD Testing Center, Building 01, No. 43 Changyang Road, Binyuan Town, Fuyang District, Guangzhou, Guangdong, China 510440  
**Telephone:** +86 20 3022 9888  
**Fax:** +86 20 3022 9879  
[www.tuv.com.cn](http://www.tuv.com.cn)

**Head Office:** TUV SUD Certification and Testing (China) Co., Ltd. Guangzhou Branch 9F, Communication Building, 160 Ring Road, Huangpu West Area, Guangzhou 510090, China

Page 1 of 11

**EMC Test Report**

**Applicant:** Jinhua Jinchu sports equipment Co., Ltd  
**Address:** Floor 1, plant 3, NO.998, jinsha street, Linjiang Industrial Zone, baliangqiao Town, Wucheng District, Jinhua City, Zhejiang Province, P.R.C.  
**Product:** Exercise equipment (Spinning Bike)  
**Model:** JC306  
**COMMERCIAL-IN-CONFIDENCE**  
Report Number: 64.710.24.4117.01

**Responsible for Name Signature Date**

Responsible for	Name	Signature	Date
Prepared by	Edward Sun		2024-11-25
Approved by	Kevin Ouyang		2024-11-25

**EXECUTIVE SUMMARY**  
This product was tested and found to be in compliance with EN IEC 55014-1:2021 EN IEC 55014-2:2021

**Page 1 of 17**

**Attestation of Conformity**  
No. EBA 126305 0005 Rev. 00

**Holder of Attestation:** Jinhua Jinchu sports equipment Co., Ltd  
Floor 1, Plant 3, NO.998, Jinsha Street, Linjiang Industrial Zone, Balingqiao Town, Wucheng District, 321000 Jinhua City, Zhejiang Province, PEOPLE'S REPUBLIC OF CHINA

**Name of Object:** Exercise equipment (Spinning Bike)  
**Model(s):** JC306  
**Description of Object:** Rating: DC 1.3(VFAA\*1)  
Protection class: Class III

**Tested according to:** EN IEC 55014-1:2021  
EN IEC 55014-2:2021

This Attestation of Conformity is issued on a voluntary basis according to the Directive 2014/30/EU relating to electromagnetic compatibility. It confirms that the listed apparatus complies with the principal protection requirements of the directive and is based on the technical specifications applicable at the time of issuance. It refers only to the particular sample submitted for conformity assessment. For details see: [www.tuv.com](http://www.tuv.com) or [www.tuv.cn](http://www.tuv.cn)

**Test report no.:** 6471024411701  
**Date:** 2024-11-27  
(Tony Liu)

Page 1 of 1  
This Attestation does not replace the regulatory EU Declaration of Conformity (DoC) and does not allow for CE marking. After preparation of the necessary documentation and establishing compliance to requirements of all applicable directives, the manufacturer may sign a DoC and apply the CE marking. The DoC is issued under the sole responsibility of the manufacturer.

TUV SUD Product Service GmbH - Rottenstele 85 - 80339 Munich - Germany

**Test Report** No.: **64.190.24.1601.01-00**  
Dated: **2024-07-30**

**Applicant:** Jinhua Jinchu sports equipment Co., Ltd  
**Address:** Floor 1, plant 3, NO.998, jinsha street, Linjiang Industrial Zone, baliangqiao Town, Wucheng District, Jinhua City, Zhejiang Province  
**Sample Submission:** The sample was submitted by applicant and identified.  
**Product Name:** Rowing Machine  
**Identification/Style No.:** H300  
**Order No.:** /  
**Manufacturer:** /  
**Address:** /  
**Country of Origin:** /  
**Buyer:** /  
**Export to:** /  
**Receipt Date of Sample:** 2024-07-10  
**Date of Testing:** From 2024-07-10 to 2024-07-30  
**Test Result:** Refer to the data listed in following pages

**Test Specifications or Test Items:** **Conclusions:**

- EN ISO 20957-1:2013 (Excluding clause 5.18) **Pass**
- EN ISO 20957-7: 2021 **Pass**

**Hardline Laboratory**  
TUV SUD Certification and Testing (China) Co., Ltd  
Guangzhou Branch

**Tested By:** Leon Huang **Reviewed By:** Pein Xu  
Leon Huang **Test Engineer** Pein Xu **Designated Reviewer**

**Note:**  
1) "General Terms & Conditions" apply. For full version, please refer to: [www.tuv.com](http://www.tuv.com) or [www.tuv.cn](http://www.tuv.cn) or [www.tuv.com.cn](http://www.tuv.com.cn)  
2) The test results are based on the information provided by the applicant. The test results are only valid for the products tested. This report is the result of a single examination of the product and does not constitute a guarantee of the quality of the product in regular production. For further details please see "Testing, Certification, Validation and Inspection Regulations" (pages A-1.3 to A-1.5).  
3) For further information please refer to: [www.tuv.com](http://www.tuv.com) or [www.tuv.cn](http://www.tuv.cn) or [www.tuv.com.cn](http://www.tuv.com.cn) or [www.tuv.com.cn](http://www.tuv.com.cn)  
4) The results are valid only in the form tested.  
5) The test results are not to be reproduced without the written approval of the laboratory.

**Laboratory:** TUV SUD Testing Center, Building 01, No. 43 Changyang Road, Binyuan Town, Fuyang District, Guangzhou, Guangdong, China 510440  
**Telephone:** +86 20 3022 9888  
**Fax:** +86 20 3022 9879  
[www.tuv.com.cn](http://www.tuv.com.cn)

**Head Office:** TUV SUD Certification and Testing (China) Co., Ltd. Guangzhou Branch 9F, Communication Building, 160 Ring Road, Huangpu West Area, Guangzhou 510090, China

Page 1 of 11

**QIMA**

**Test report**  
T-24352400-13-R1-RV1

**Overall result** **Pass**

Please refer to the following pages for test result summary and notes.

**Client information**  
Client: Shenzhenhishim(wangluo)ye(xiangongsi)  
Address: yanjinrongdasha19D14 qutairanshizh261, Futian district, Shenzhen, Guangdong Province

**Sample information**  
Description: Rowing Machine  
Supplier: -  
Country of origin: China  
Country of distribution: Europe  
Product reference #: -  
Item #/ model #: H300  
Manufacturer/ factory: Jinhua Jinchu sports equipment Co., Ltd  
Quantity submitted: 1 pc+1 lot of retest sample

**General information**  
Sample receipt date: 09-Dec-2024  
Testing period: 09-Dec-2024 to 26-Dec-2024  
Report date: 06-Jan-2025

QIMA Testing (Shanghai) Limited  
Miao Jiang  
Supervisor, Chemical Laboratory

support@qima.com • QIMA Limited  
Page 1 of 17

**QIMA**

**Test report**  
T-24355746-13-R1-RV1

**Overall result** **Pass**

Please refer to the following pages for test result summary and notes.

**Client information**  
Client: Shenzhenhishim(wangluo)ye(xiangongsi)  
Address: yanjinrongdasha19D14 qutairanshizh261, Futian district, Shenzhen, Guangdong Province

**Sample information**  
Description: Exercise Bike  
Supplier: -  
Country of origin: China  
Country of distribution: Europe  
Product reference #: -  
Item #/ model #: JC312 JC303 JC308 JC306  
Manufacturer/ factory: Jinhua Jinchu sports equipment Co., Ltd  
Quantity submitted: 5 pcs+1 lot of retest sample

**General information**  
Sample receipt date: 10-Dec-2024  
Testing period: 10-Dec-2024 to 31-Dec-2024  
Report date: 06-Jan-2025

QIMA Testing (Shanghai) Limited  
Miao Jiang  
Supervisor, Chemical Laboratory

support@qima.com • QIMA Limited  
Page 1 of 24

Please contact us if you need more certificates. . .



阻力方式/Resistance way

磁控/Magnetic control



调节助力/Resistance

1-16 Levels



功能/Fuction

SCAN,TIME,DIS,CAL,SPEED



<b>参数</b> PARAMETERS	调节阻力/Resistance	1-16 Levels
	滑轨/Sliding Rail	不锈钢/Steel
	飞轮重量/Flywheel Weight	2KG
	把手/Handlebar	泡棉/Foam
	电子表/Monitors	扫描、时间、次数、里程、卡路里、桨频 Scan,Time,Count,Distance,Calorie,Spm
	证书/Certificate	CE,ROHS,EN957,EMC
<b>尺寸和包装</b> SIZE AND PACKAGING	组立尺寸/Assembly Size	L1523*W450*H708MM
	包装尺寸/Carton Size	890*190*570MM
	最大承重/Max.user's weight	120KG
	净重/毛重 N.W./G.W.	19.8/22.3KG
	装柜量/Container Loading	20GP /40GP /40HQ 304PCS/640PCS/744PCS

# H310 Rowing Machine



阻力方式/Resistance way

电控/Electronic control



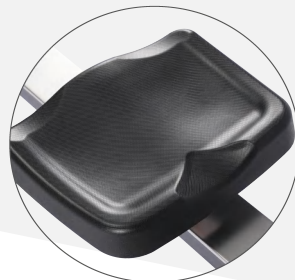
调节助力/Resistance

1-32 Levels



功能/Fuction

SCAN,TIME,DIS,CAL,SPEED



参数 PARAMETERS	调节阻力/Resistance	1-32Levels
	滑轨/Sliding Rail	不锈钢/Steel
	飞轮重量/Flywheel Weight	2KG
	蓝牙/Bluetooth	Compatible with Kinomap
	电子表/Monitors	速度、时间、次数、里程、卡路里、500米桨数 Speed,Time,Count,Distance,Calorie,500m Pace
	证书/Certificate	CE,ROHS,EN957,EMC
尺寸和包装 SIZE AND PACKAGING	组立尺寸/Assembly Size	L1523*W450*H718MM
	包装尺寸/Carton Size	855*178*570MM
	最大承重/Max.user's weight	120KG
	净重/毛重 N.W./G.W.	19.4/21.8KG
	装柜量/Container Loading	20GP /40GP /40HQ 350PCS/727PCS/839PCS



阻力方式/Resistance way

磁控/Magnetic control



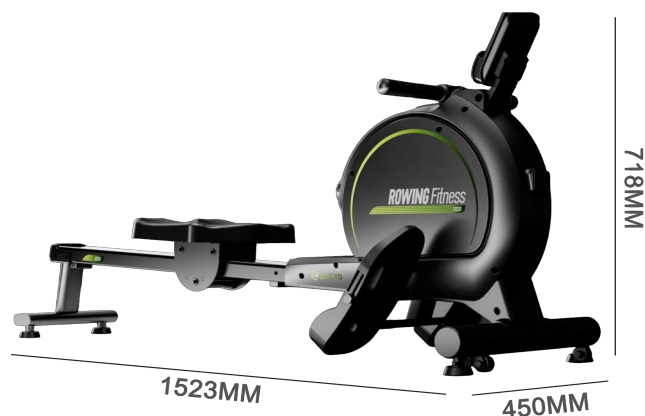
调节助力/Resistance

1-16 Levels



功能/Fuction

SCAN,TIME,DIS,CAL,SPEED



参数 PARAMETERS	调节阻力/Resistance	1-16 Levels
	滑轨/Sliding Rail	不锈钢/Steel
	飞轮重量/Flywheel Weight	2KG
	把手/Handlebar	泡棉/Foam
	电子表/Monitors	扫描、时间、次数、里程、卡路里、桨频 Scan,Time,Count,Distance,Calorie,Spm
	证书/Certificate	CE,ROHS,EN957,EMC
尺寸和包装 SIZE AND PACKAGING	组立尺寸/Assembly Size	L1523*W450*H718MM
	包装尺寸/Carton Size	855*178*570MM
	最大承重/Max.user's weight	120KG
	净重/毛重 N.W./G.W.	19.4/21.8KG
	装柜量/Container Loading	20GP /40GP /40HQ 350PCS/727PCS/839PCS

# H350 Rowing Machine



阻力方式/Resistance way

电控/Electronic control



调节助力/Resistance

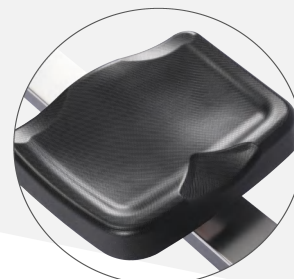
1-32 Levels



功能/Fuction

SCAN,TIME,DIS,CAL,SPEED...

(Compatible with Kinomap)



参数 PARAMETERS	调节阻力/Resistance	1-32 Levels
	滑轨/Sliding Rail	不锈钢/Steel
	飞轮重量/Flywheel Weight	2KG
	蓝牙/Bluetooth	Compatible with Kinomap
	电子表/Monitors	速度、时间、次数、里程、卡路里、500米桨数 Speed,Time,Count,Distance,Calorie,500m Pace
	证书/Certificate	CE,ROHS,EN957,EMC
尺寸和包装 SIZE AND PACKAGING	组立尺寸/Assembly Size	L1523*W450*H718MM
	包装尺寸/Carton Size	855*175*578MM
	最大承重/Max.user's weight	120KG
	净重/毛重 N.W./G.W.	19.7/21.85KG
	装柜量/Container Loading	20GP /40GP /40HQ 350PCS/727PCS/839PCS



阻力方式/Resistance way

磁控/Magnetic control



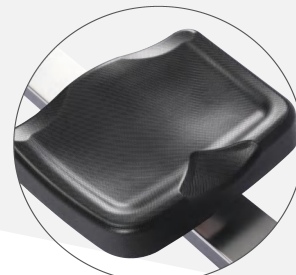
调节助力/Resistance

1-16 Levels



功能/Fuction

SCAN,TIME,DIS,CAL,SPEED...



参数 PARAMETERS	调节阻力/Resistance	1-16 Levels
	滑轨/Sliding Rail	不锈钢/Steel
	飞轮重量/Flywheel Weight	2KG
	蓝牙/Bluetooth	无/NO
	电子表/Monitors	扫描、时间、次数、里程、卡路里、桨频 Scan,Time,Count,Distance,Calorie,Spm
	证书/Certificate	CE,ROHS,EN957,EMC
尺寸和包装 SIZE AND PACKAGING	组立尺寸/Assembly Size	L1523*W450*H718MM
	包装尺寸/Carton Size	855*175*578MM
	最大承重/Max.user's weight	120KG
	净重/毛重 N.W./G.W.	19.7/21.85KG
	装柜量/Container Loading	20GP /40GP /40HQ 350PCS/727PCS/839PCS

# JC302 Magnetic Spin Bike



阻力方式/Resistance way

磁控/Magnetic control



传输系统/Transmission system

皮带/Belt



功能/Fuction

SCAN, TIME, DIS, CAL, SPEED...



参数 PARAMETERS	制动系统/Braking System	磁控制车系统/Magnetic Control System
	传动系统/Transmission System	皮带/Belt
	飞轮重量/Flywheel Weight	4KG
	把手/Handlebar	泡棉/Foam
	电子表/Monitors	扫描, 时间, 速度, 里程, 总里程, 卡路里 scan, time, speed, distance, odo, caloris
	证书/Certificate	CE, ROHS, EN957, EMC
尺寸和包装 SIZE AND PACKAGING	组立尺寸/Assembly Size	L1030*W475*H1190MM
	包装尺寸/Carton Size	880*175*700MM
	最大承重/Max.user's weight	120KG
	净重/毛重 N.W./G.W.	20/22.7KG
	装柜量/Container Loading	20GP /40GP /40HQ 272PCS/568PCS/653PCS



阻力方式/Resistance way

摩擦/Friction



传输系统/Transmission system

6PJ皮带/Belt



功能/Fuction

SCAN,TIME,DIS,CAL,SPEED



参数 PARAMETERS	制动系统/Braking System	摩擦刹车系统/Friction Braking System
	传动系统/Transmission System	皮带/Belt
	飞轮重量/Flywheel Weight	6.5KG
	把手/Handlebar	泡棉/Foam
	电子表/Monitors	扫描、时间、速度、里程、总里程、卡路里 Scan,Time,Speed,Distance,Odo,Calorie
	证书/Certificate	CE,ROHS,EN957,EMC
尺寸和包装 SIZE AND PACKAGING	组立尺寸/Assembly Size	L1090*W510*H1140MM
	包装尺寸/Carton Size	990*190*760MM
	最大承重/Max.user's weight	120KG
	净重/毛重 N.W./G.W.	26/29.8KG
	装柜量/Container Loading	20GP /40GP /40HQ 204PCS/431PCS/503PCS



阻力方式/Resistance way

摩擦/Friction



传输系统/Transmission system

6PJ皮带/Belt



功能/Fuction

SCAN,TIME,DIS,CAL,SPEED



参数 PARAMETERS	制动系统/Braking System	摩擦刹车系统/Friction Braking System
	滑轨/Transmission System	皮带/Belt
	飞轮重量/Flywheel Weight	5KG
	把手/Handlebar	浸塑/Dipping
	电子表/Monitors	扫描、时间、速度、里程、总里程、卡路里 Scan,Time,Speed,Distance,Odo,Calorie
	证书/Certificate	CE,ROHS,EN957,EMC
尺寸和包装 SIZE AND PACKAGING	组立尺寸/Assembly Size	L1140*W520*H1190MM
	包装尺寸/Carton Size	915*190*760MM
	最大承重/Max.user's weight	120KG
	净重/毛重 N.W./G.W.	24.85/27.85KG
	装柜量/Container Loading	20GP /40GP /40HQ 228PCS/467PCS/545PCS



阻力方式/Resistance way

摩擦/Friction



传输系统/Transmission system

6PJ皮带/Belt



功能/Fuction

SCAN, TIME, DIS, CAL, SPEED



参数 PARAMETERS	制动系统/Braking System	摩擦刹车系统/Friction Braking System
	传动系统/Transmission System	皮带/Belt
	飞轮重量/Flywheel Weight	5KG
	把手/Handlebar	泡棉/Foam
	电子表/Monitors	扫描、时间、速度、里程、总里程、卡路里 Scan, Time, Speed, Distance, Odo, Calorie
	证书/Certificate	CE, ROHS, EN957, EMC
尺寸和包装 SIZE AND PACKAGING	组立尺寸/Assembly Size	L1140*W520*H1190MM
	包装尺寸/Carton Size	915*190*760MM
	最大承重/Max.user's weight	120KG
	净重/毛重 N.W./G.W.	24.2/27.2KG
	装柜量/Container Loading	20GP /40GP /40HQ 228PCS/467PCS/545PCS

# JC306 Magnetic Spin Bike



阻力方式/Resistance way

磁控/Magnetic control



传输系统/Transmission system

6PJ皮带/Belt



功能/Fuction

SCAN,TIME,DIS,CAL,SPEED



参数 PARAMETERS	制动系统/Braking System	磁控制车系统/Magnetic Control System
	传动系统/Transmission System	皮带/Belt
	飞轮重量/Flywheel Weight	5KG
	把手/Handlebar	泡棉/Foam
	电子表/Monitors	扫描、时间、速度、里程、总里程、卡路里 Scan,Time,Speed,Distance,Odo,Calorie
	证书/Certificate	CE,ROHS,EN957,EMC
尺寸和包装 SIZE AND PACKAGING	组立尺寸/Assembly Size	L1140*W520*H1190MM
	包装尺寸/Carton Size	915*190*760MM
	最大承重/Max.user's weight	120KG
	净重/毛重 N.W./G.W.	25/28KG
	装柜量/Container Loading	20GP /40GP /40HQ 228PCS/467PCS/545PCS



阻力方式/Resistance way

磁控/Magnetic control



传输系统/Transmission system

6PJ皮带/Belt



功能/Fuction

SCAN,TIME,DIS,CAL,SPEED



参数 PARAMETERS	制动系统/Braking System	磁控制车系统/Magnetic Control System
	传动系统/Transmission System	皮带/Belt
	飞轮重量/Flywheel Weight	6KG
	把手/Handlebar	泡棉/Foam
	电子表/Monitors	扫描、时间、速度、里程、总里程、卡路里 Scan,Time,Speed,Distance,Odo,Calorie
	证书/Certificate	CE,ROHS,EN957,EMC
尺寸和包装 SIZE AND PACKAGING	组立尺寸/Assembly Size	L1106*W525*H1193MM
	包装尺寸/Carton Size	1050*190*760MM
	最大承重/Max.user's weight	120KG
	净重/毛重 N.W./G.W.	27.2/30.9KG
	装柜量/Container Loading	20GP /40GP /40HQ 197PCS/407PCS/474PCS



阻力方式/Resistance way

摩擦/Friction



传输系统/Transmission system

6PJ皮带/Belt



功能/Fuction

SCAN,TIME,DIS,CAL,SPEED



参数 PARAMETERS	制动系统/Braking System	摩擦刹车系统/Friction Braking System
	传动系统/Transmission System	皮带/Belt
	飞轮重量/Flywheel Weight	6.5KG
	把手/Handlebar	浸塑/Dipping
	电子表/Monitors	扫描、时间、速度、里程、总里程、卡路里 Scan,Time,Speed,Distance,Odo,Calorie
	证书/Certificate	CE,ROHS,EN957,EMC
尺寸和包装 SIZE AND PACKAGING	组立尺寸/Assembly Size	L1106*W525*H1193MM
	包装尺寸/Carton Size	1050*190*760MM
	最大承重/Max.user's weight	120KG
	净重/毛重 N.W./G.W.	27.3/31.4KG
	装柜量/Container Loading	20GP /40GP /40HQ 197PCS/407PCS/474PCS



阻力方式/Resistance way

摩擦/Friction



传输系统/Transmission system

6PJ皮带/Belt



功能/Fuction

SCAN, TIME, DIS, CAL, SPEED



参数 PARAMETERS	制动系统/Braking System	摩擦刹车系统/Friction Braking System
	传动系统/Transmission System	皮带/Belt
	飞轮重量/Flywheel Weight	6.5KG
	把手/Handlebar	泡棉/Foam
	电子表/Monitors	扫描、时间、速度、里程、总里程、卡路里 Scan, Time, Speed, Distance, Odo, Calorie
	证书/Certificate	CE, ROHS, EN957, EMC
尺寸和包装 SIZE AND PACKAGING	组立尺寸/Assembly Size	L1106*W525*H1193MM
	包装尺寸/Carton Size	1050*190*760MM
	最大承重/Max.user's weight	120KG
	净重/毛重 N.W./G.W.	27/31.1KG
	装柜量/Container Loading	20GP /40GP /40HQ 197PCS/407PCS/474PCS



阻力方式/Resistance way

磁控/Magnetic control



传输系统/Transmission system

6PJ皮带/Belt



功能/Fuction

SCAN,TIME,DIS,CAL,SPEED



参数 PARAMETERS	制动系统/Braking System	磁控制车系统/Magnetic Control System
	传动系统/Transmission System	皮带/Belt
	飞轮重量/Flywheel Weight	6KG
	把手/Handlebar	泡棉/Foam
	电子表/Monitors	扫描、时间、速度、里程、总里程、卡路里 Scan,Time,Speed,Distance,Odo,Calorie
	证书/Certificate	CE,ROHS,EN957,EMC
尺寸和包装 SIZE AND PACKAGING	组立尺寸/Assembly Size	L1106*W525*H1193MM
	包装尺寸/Carton Size	1050*190*760MM
	最大承重/Max.user's weight	120KG
	净重/毛重 N.W./G.W.	27.2/30.9KG
	装柜量/Container Loading	20GP /40GP /40HQ 197PCS/407PCS/474PCS



阻力方式/Resistance way

磁控/Magnetic control



传输系统/Transmission system

6PJ皮带/Belt



功能/Fuction

SCAN, TIME, DIS, CAL, SPEED



参数 PARAMETERS	制动系统/Braking System	磁控制车系统/Magnetic Control System
	传动系统/Transmission System	皮带/Belt
	飞轮重量/Flywheel Weight	5.5KG
	应用程序/APP	KINOMAP and ZWIFT
	电子表/Monitors	扫描, 时间, 速度, 里程, 卡路里, 转速, 蓝牙 scan, time, speed, distance, caloris, spm, bluetooth
	证书/Certificate	CE, ROHS, EN957, EMC
尺寸和包装 SIZE AND PACKAGING	组立尺寸/Assembly Size	L1078*W506*H1120MM
	包装尺寸/Carton Size	960*225*815MM
	最大承重/Max.user's weight	120KG
	净重/毛重 N.W./G.W.	27.2/30.8KG
	装柜量/Container Loading	20GP /40GP /40HQ 162PCS/328PCS/394PCS



阻力方式/Resistance way

摩擦刹车/Friction braking system



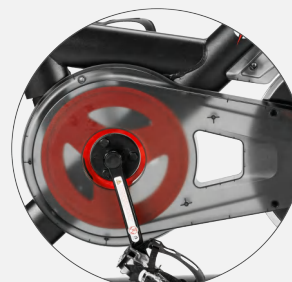
传输系统/Transmission system

皮带/Belt



功能/Fuction

SCAN, TIME, DIS, CAL, SPEED...



参数 PARAMETERS	制动系统/Braking System	摩擦刹车系统/Friction Braking System
	传动系统/Transmission System	皮带/Belt
	飞轮重量/Flywheel Weight	5KG
	把手/Handlebar	泡棉/Foam
	电子表/Monitors	扫描, 时间, 速度, 里程, 总里程, 卡路里 scan, time, speed, distance, odo, caloris
	证书/Certificate	CE, ROHS, EN957, EMC
尺寸和包装 SIZE AND PACKAGING	组立尺寸/Assembly Size	L1077*W514*H1224MM
	包装尺寸/Carton Size	950*190*760MM
	最大承重/Max.user's weight	120KG
	净重/毛重 N.W./G.W.	24.6/27.8KG
	装柜量/Container Loading	20GP /40GP /40HQ 222PCS/450PCS/522PCS

# JC318 Magnetic Spin Bike



阻力方式/Resistance way

磁控/Magnetic control



传输系统/Transmission system

6PJ皮带/Belt



功能/Fuction

SCAN,TIME,DIS,CAL,SPEED



参数 PARAMETERS	制动系统/Braking System	磁控制车系统/Magnetic Control System
	传动系统/Transmission System	皮带/Belt
	飞轮重量/Flywheel Weight	5KG
	把手/Handlebar	泡棉/Foam
	电子表/Monitors	扫描、时间、速度、里程、总里程、卡路里 Scan,Time,Speed,Distance,Odo,Calorie
	证书/Certificate	CE,ROHS,EN957,EMC
尺寸和包装 SIZE AND PACKAGING	组立尺寸/Assembly Size	L1077*W514*H1224MM
	包装尺寸/Carton Size	950*190*760MM
	最大承重/Max.user's weight	120KG
	净重/毛重 N.W./G.W.	25.2/28.6KG
	装柜量/Container Loading	20GP /40GP /40HQ 222PCS/450PCS/522PCS



阻力方式/Resistance way

磁控/Magnetic control



传输系统/Transmission system

皮带/Belt



功能/Fuction

SCAN, TIME, DIS, CAL, SPEED...



参数 PARAMETERS	制动系统/Braking System	磁控制车系统/Magnetic Control System
	传动系统/Transmission System	皮带/Belt
	飞轮重量/Flywheel Weight	5KG
	把手/Handlebar	泡棉/Foam
	电子表/Monitors	扫描, 时间, 速度, 里程, 总里程, 卡路里 scan, time, speed, distance, odo, caloris
	证书/Certificate	CE, ROHS, EN957, EMC
尺寸和包装 SIZE AND PACKAGING	组立尺寸/Assembly Size	L1077*W514*H1224MM
	包装尺寸/Carton Size	950*190*760MM
	最大承重/Max.user's weight	120KG
	净重/毛重 N.W./G.W.	25.1/28.5KG
	装柜量/Container Loading	20GP /40GP /40HQ 222PCS/450PCS/522PCS



阻力方式/Resistance way

磁控/Magnetic control



传输系统/Transmission system

6PJ皮带/Belt



应用程序/APP

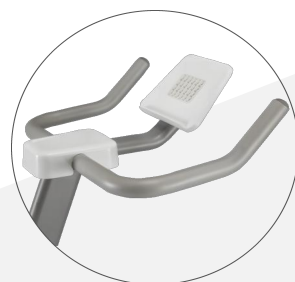
KINOMAP and ZWIFT



1145MM

560MM

1170MM



参数 PARAMETERS	制动系统/Braking System	磁控制车系统/Magnetic Control System
	传动系统/Transmission System	皮带/Belt
	飞轮重量/Flywheel Weight	5.5KG
	应用程序/APP	KINOMAP and ZWIFT
	电子表/Monitors	NO
	证书/Certificate	CE, ROHS, EN957, EMC
尺寸和包装 SIZE AND PACKAGING	组立尺寸/Assembly Size	L1170*W560*H1145MM
	包装尺寸/Carton Size	1040*225*760MM
	最大承重/Max.user's weight	120KG
	净重/毛重 N.W./G.W.	31.5/35.7KG
	装柜量/Container Loading	20GP /40GP /40HQ 168PCS/342PCS/375PCS

# JC503 Recumbent Exercise Bike



阻力方式/Resistance way

磁控/Magnetic control



传输系统/Transmission system

皮带/Belt



功能/Fuction

SCAN,TIME,DIS,CAL,SPEED...



参数 PARAMETERS	制动系统/Braking System	磁控制车系统/Magnetic Control System
	传动系统/Transmission System	皮带/Belt
	飞轮重量/Flywheel Weight	4KG
	电子表/Monitors	扫描, 时间, 速度, 里程, 总里程, 卡路里, 心率 scan,time,speed,distance,odo,caloris,pulse
	证书/Certificate	CE, ROHS, EN957, EMC
尺寸和包装 SIZE AND PACKAGING	组立尺寸/Assembly Size	L1387*W615*H1100MM
	包装尺寸/Carton Size	1150*208*530MM
	最大承重/Max.user's weight	120KG
	净重/毛重 N.W./G.W.	26.58/29.74KG
	装柜量/Container Loading	20GP /40GP /40HQ 241PCS/484PCS/570PCS

# JC505 Recumbent Exercise Bike



阻力方式/Resistance way

磁控/Magnetic control



传输系统/Transmission system

皮带/Belt



功能/Fuction

SCAN, TIME, DIS, CAL, SPEED...



参数 PARAMETERS	制动系统/Braking System	磁控制车系统/Magnetic Control System
	传动系统/Transmission System	皮带/Belt
	飞轮重量/Flywheel Weight	4KG
	电子表/Monitors	扫描, 时间, 速度, 里程, 总里程, 卡路里, 心率 scan,time,speed,distance,odo,caloris,pulse
	证书/Certificate	CE, ROHS, EN957, EMC
尺寸和包装 SIZE AND PACKAGING	组立尺寸/Assembly Size	L1387*W615*H1100MM
	包装尺寸/Carton Size	1180*255*530MM
	最大承重/Max.user's weight	120KG
	净重/毛重 N.W./G.W.	28.32/32.1KG
	装柜量/Container Loading	20GP /40GP /40HQ 199PCS/402PCS/450PCS



阻力方式/Resistance way

磁控/Magnetic control



传输系统/Transmission system

皮带/Belt



功能/Fuction

SCAN, TIME, DIS, CAL, SPEED...



参数 PARAMETERS	制动系统/Braking System	磁控刹车系统/Magnetic Control System
	传动系统/Transmission System	皮带/Belt
	飞轮重量/Flywheel Weight	2.5KG
	把手/Handlebar	泡棉/Foam
	电子表/Monitors	扫描, 时间, 速度, 里程, 总里程, 卡路里, 心率 scan,time,speed,distance,odo,caloris,pulse
	证书/Certificate	CE, ROHS, EN957, EMC
尺寸和包装 SIZE AND PACKAGING	组立尺寸/Assembly Size	L830*W445*H1133MM
	包装尺寸/Carton Size	930*385*215MM
	最大承重/Max.user's weight	120KG
	净重/毛重 N.W./G.W.	16/19KG
	装柜量/Container Loading	20GP /40GP /40HQ 410PCS/844PCS/920PCS



阻力方式/Resistance way

磁控/Magnetic control



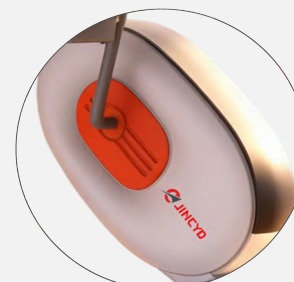
传输系统/Transmission system

皮带/Belt



功能/Fuction

SCAN,TIME,DIS,CAL,SPEED...



参数 PARAMETERS	制动系统/Braking System	磁控刹车系统/Magnetic Control System
	传动系统/Transmission System	皮带/Belt
	飞轮重量/Flywheel Weight	2.5KG
	把手/Handlebar	泡棉/Foam
	电子表/Monitors	扫描, 时间, 速度, 里程, 总里程, 卡路里, 心率 scan,time,speed,distance,odo,caloris,pulse
	证书/Certificate	CE, ROHS, EN957, EMC
尺寸和包装 SIZE AND PACKAGING	组立尺寸/Assembly Size	L940*W535*H1163MM
	包装尺寸/Carton Size	980*385*235MM
	最大承重/Max.user's weight	120KG
	净重/毛重 N.W./G.W.	19/21.68KG
	装柜量/Container Loading	20GP /40GP /40HQ 359PCS/720PCS/792PCS



金华市锦辰运动器材有限公司

Jinhua Jinchensport Co., Ltd.

📍 浙江省金华市婺城区临江工业区金沙街998号

✉️ [lucyfu@jinchensport.com](mailto:lucyfu@jinchensport.com) 📞 +86 1395 7999 801

🌐 [www.jinchensport.com](http://www.jinchensport.com)